

# Enrollment Guide

## 2024 Medicare Advantage HMO-POS

Value-Based Insurance Design (VBID)

### CENTRAL TEXAS

Qualify for Extra Help: Pay \$0 premium and \$0 for prescription drugs





This guide highlights the benefits of the BSW SeniorCare Advantage Select Rx Assist plan and provides the information you need to make an informed decision about your Medicare benefits plan.

## Inside this guide

- ▼ Introduction and Enrollment Information
- ▼ 2024 Summary of Benefits
- ▼ Scope of Appointment Form
- ▼ Enrollment Application
- ▼ Medicare Advantage Star Rating
- ▼ Business Reply Mail Envelope

## Contact info

**Sales/licensed insurance agent**  
**1.800.782.5068** TTY: 711

**Oct. 1 - March 31:** 7 days a week,  
8 AM to 8 PM. Closed on major holidays.

**April 1 - Sept. 30:** Monday-Friday,  
8 AM to 5 PM. Closed on major holidays.

**Enroll online**  
**[BSWHealthPlan.com/Medicare](https://BSWHealthPlan.com/Medicare)**

**Mail completed enrollment applications to:**  
**[Baylor Scott & White Health Plan](#)**  
**Attn: Enrollment Department**  
**1206 W. Campus Drive**  
**Temple, TX 76502**

**Fax completed enrollment applications to:**  
**1.254.298.3334**

**Customer service**  
**1.866.334.3141** TTY: 711

**Oct. 1 - March 31:** 7 days a week,  
7 AM to 8 PM. Closed on major holidays.

**April 1 - Sept. 30:** Monday-Friday,  
7 AM to 8 PM. Closed on major holidays.

## Medicare Advantage coverage that keeps you at the center of it all

### Your budget.

With \$0 to low premium and affordable copays, the BSW SeniorCare Advantage Select Rx Assist plan helps you manage your health AND your monthly expenses. If you qualify for Extra Help,\* your cost for prescription drugs is \$0 – making your healthcare budget stretch a lot farther.

If you do not qualify for Extra Help, your prescription drug costs in this plan will be 25% of the cost of the prescription after Part D deductible.

### Your doctor.

Choose from among Baylor Scott & White Health’s extensive network of providers, plus thousands of additional in-network providers across Central and North Texas. You’ll also enjoy the freedom of having worldwide urgent and emergency care coverage, and the opportunity to see in-network specialists without a referral.

### Your complete care.

With BSW SeniorCare Advantage, you get all the benefits of Original Medicare plus many supplemental benefits that help reduce out-of-pocket expenses and make life easier, like:

- ▼ Vision
- ▼ Hearing
- ▼ Dental
- ▼ In-home meals
- ▼ Fitness membership
- ▼ Over-the-counter allowance
- ▼ Routine transportation to approved locations

#### \*Medicare Extra Help and Low Income Subsidy (LIS):

Extra Help, also referred to as a Low Income Subsidy, is a Medicare program that helps people with limited income and resources pay for Medicare drug coverage (Part D) premiums, deductibles, coinsurance and other costs. It also relieves those who qualify from having to pay a Part D late enrollment penalty.

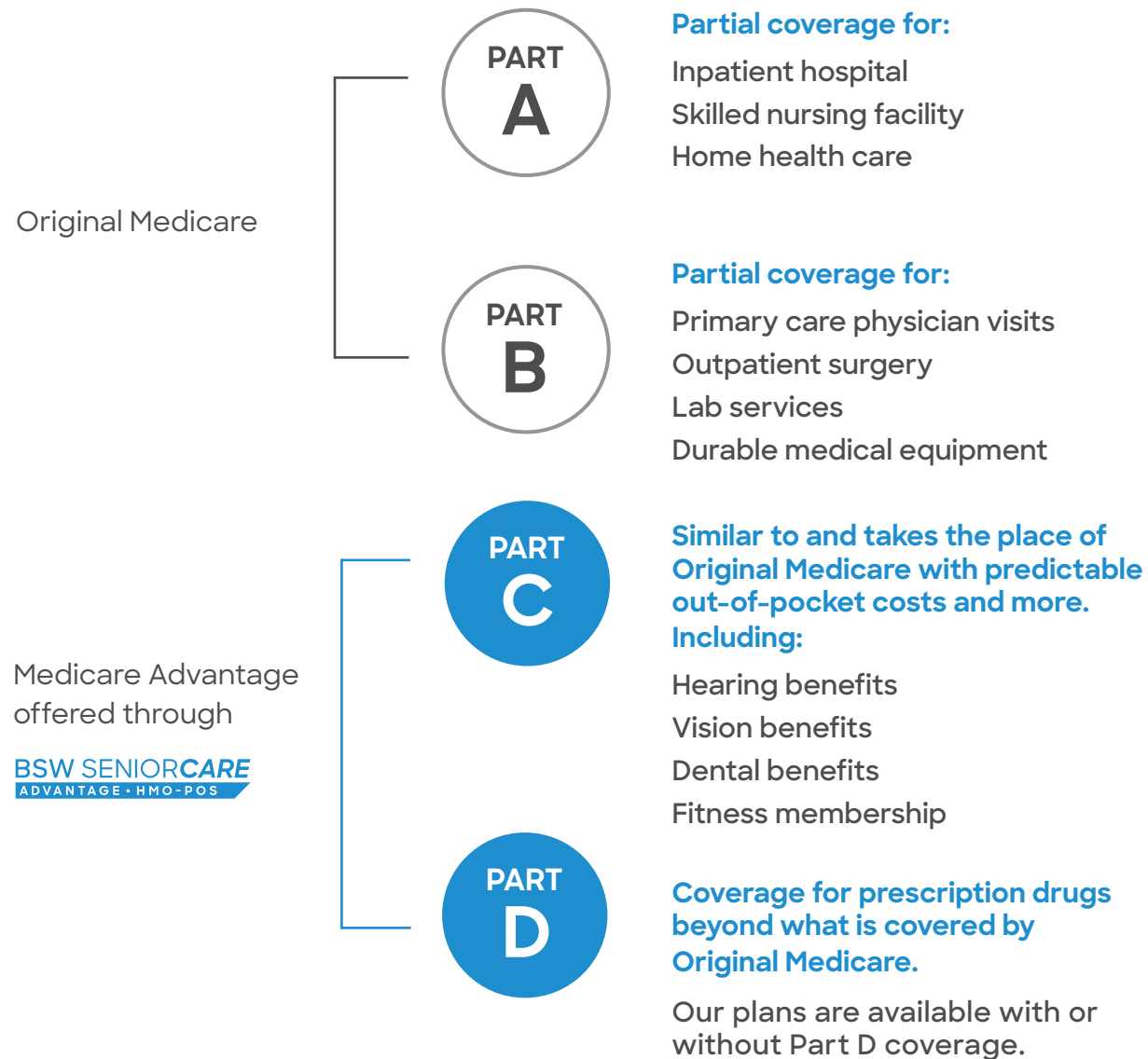
To find out if you qualify, visit:

[Medicare.gov/basics/costs/help/drug-costs](https://www.Medicare.gov/basics/costs/help/drug-costs); or

Social Security Administration at [ssa.gov/medicare/part-d-extra-help](https://www.ssa.gov/medicare/part-d-extra-help)

Speak to a Licensed Insurance Agent **1.800.782.5068/TTY: 711**

## How Medicare works



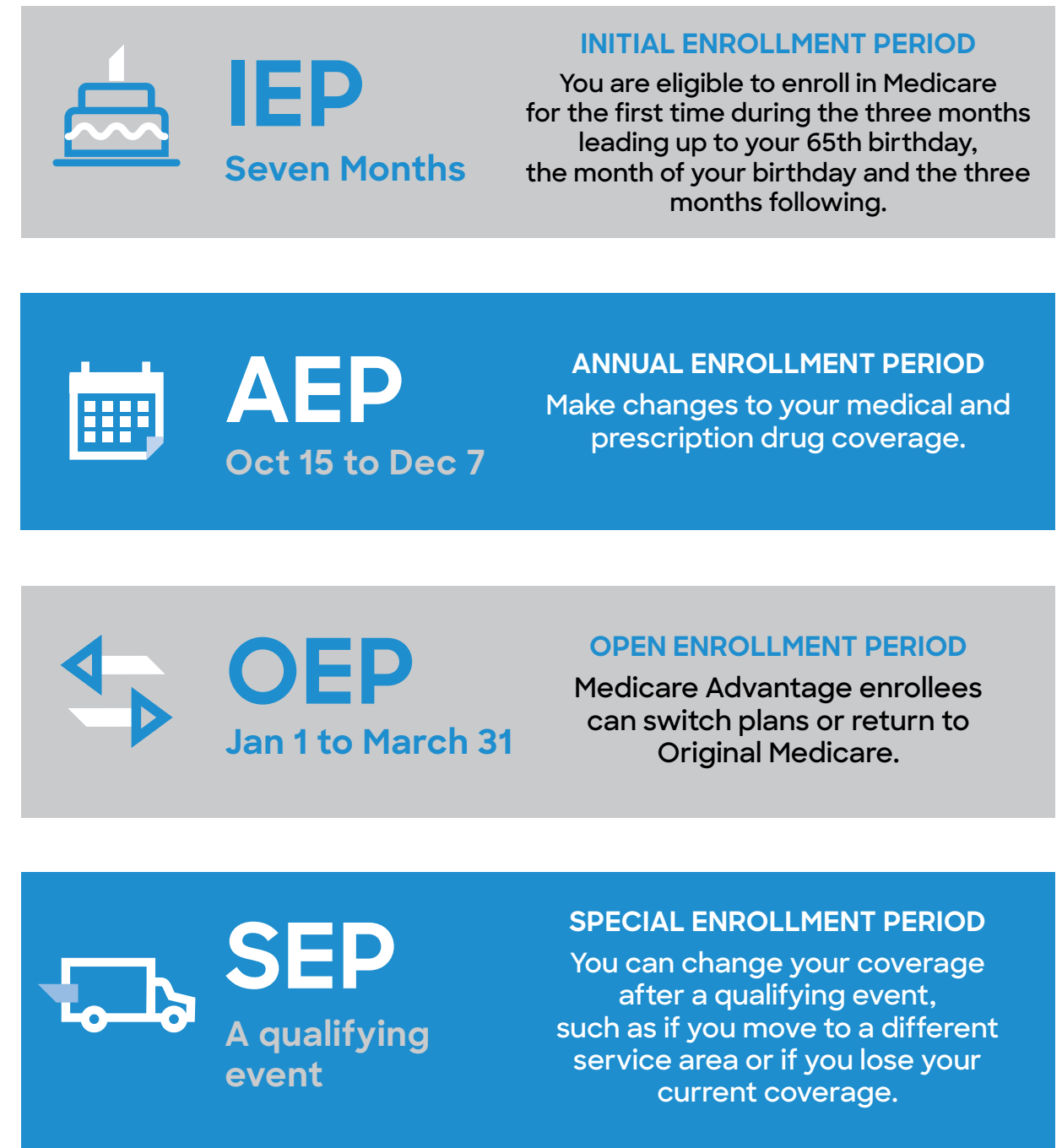
## How to qualify for BSW SeniorCare Advantage

- ▶ You must live in our service area. Check the map located in the Summary of Benefits to ensure you live within our service area.
- ▶ You must be enrolled in Medicare Part B.
- ▶ You must be entitled to benefits under Medicare Part A. If you do not have Medicare Part A, you can purchase it from Social Security.

## How to qualify for Extra Help

Refer to the gray box on the previous page for information.

## Medicare enrollment periods



Speak to a Licensed Insurance Agent **1.800.782.5068/TTY: 711**

## BSW SeniorCare Advantage

Enrolling in a Medicare Advantage plan like BSW SeniorCare Advantage Select Rx Assist from Baylor Scott & White Health Plan can help lower your out-of-pocket healthcare expenses and give you many bonus benefits not available through Original Medicare.

### Is a primary care physician (PCP) required to direct care?

**No.** You do not have to select a PCP to direct your care with BSW SeniorCare Advantage plans. You can see a network specialist without a referral.

### How do you know if your provider is in our network?

Before you enroll, ask your local insurance agent about our provider directories or view “Find a Provider” online at [BSWHealthPlan.com/Medicare](https://www.bswhealthplan.com/Medicare).

### How do you know if your prescriptions are covered?

Ask your local insurance agent or visit [BSWHealthPlan.com/Medicare](https://www.bswhealthplan.com/Medicare) to view the formulary (drug list) and pharmacy directory.

### Can you get treatment outside the network?

Except for urgent and emergency care, you must get your care and services from providers in Baylor Scott & White Health Plan’s BSW SeniorCare Advantage HMO-POS network. If you choose to get non-urgent or non-emergency services out-of-network, you will be personally responsible for payment of all charges.

## Coordinated care that gives you the power to live better

Baylor Scott & White Health Plan offers an integrated healthcare experience, which means your Baylor Scott & White Health doctors and your Medicare Advantage plan are on the same team, sharing resources and collaborating to help give you the best healthcare experience possible.

- ▶ Your Baylor Scott & White Health providers and your health plan use the same electronic medical records system to monitor your care. They collaborate easily and relieve you from reporting and sharing your information with each of your providers.
- ▶ You can access your medical information AND your health plan information in the same place – [MyBSWHealth.com](https://www.MyBSWHealth.com).
- ▶ There’s also a convenient app when you need your information on-the-go (MyBSWHealth app, available on the App Store or Google Play).
- ▶ MyBSWHealth is also your connection to \$0 virtual care visits with a Baylor Scott & White provider, anywhere in Texas.

It’s thoughtful, coordinated medical care and coverage, from a system you can trust.



Speak to a Licensed Insurance Agent [1.800.782.5068](tel:18007825068)/TTY: 711

## Supplemental highlights

**Hearing.** As part of our commitment to helping with our members' overall quality of life, we offer essential hearing services that are not covered by Original Medicare, including a routine hearing exam and an allowance every three years toward the purchase of hearing aids.

**Vision.** Regular eye exams may do more than help maintain your vision. They may also help detect other serious health issues such as diabetes or high blood pressure.\* Our 2024 plans provide coverage for a routine annual eye exam, plus an annual allowance toward the purchase of contacts, frames and lenses. You must use a network vision provider.

**Dental.** Original Medicare does not cover traditional dental care, but BSW SeniorCare Advantage Select Rx Assist features dental benefits through MetLife for no additional premium.

MetLife's Preferred Dentist Program is a dental PPO benefit. You can visit any licensed dentist – in or out of the MetLife PDP Plus dentist network – to receive benefits. However, if you use an out-of-network provider, your share of the costs for your covered services may be higher.

Find a participating dentist at [MetLife.com](https://www.metlife.com).

\*American Academy of Ophthalmology, "20 Surprising Health Problems an Eye Exam Can Catch," by Reena Mukamal, April 29, 2022, American Academy of Ophthalmology, aao.org

**Fitness membership.** BSW SeniorCare Advantage Select Rx Assist includes fitness benefits with the Silver&Fit® program. This program helps you maintain or improve your fitness with classes, digital tools and healthy aging resources.

**Routine transportation.** When you need help with routine transportation, you can count on your BSW SeniorCare Advantage Select Rx Assist plan. The plan includes transportation to approved locations such as medical appointments, physical therapy visits, labs, grocery stores and drug stores.

**In-home meals.** The BSW SeniorCare Advantage Select Rx Assist plan includes meals that can be delivered to your home after a hospital stay. This extra support can help ease recovery and make sure you get the nutrition you need at a critical time.

**Over-the-counter (OTC) allowance.** The plan features a quarterly purchase allowance (based on calendar quarter) from participating retailers for eligible over-the-counter items such as bandages, cold and allergy medicines, pain relievers and more.

**Supplemental benefits are included in BSW SeniorCare Advantage Select Rx Assist for no additional premium.**

Speak to a Licensed Insurance Agent [1.800.782.5068](tel:18007825068)/TTY: 711

## Affordable prescriptions

With BSW SeniorCare Advantage Select Rx Assist, there's no need for a separate Part D prescription drug plan. Prescription drug benefits are included in this plan for no additional premium.

If you qualify for Extra Help,\* your covered prescription drugs are available for \$0. If you don't qualify, you'll pay 25% of the cost of drugs covered on this plan after Part D deductible.

Additional requirements or limits on prescription drug coverage include:

- ▼ **Prior authorization:** BSW SeniorCare Advantage Select Rx Assist requires you or your physician to get prior authorization for certain drugs. This means you will need to get approval from the health plan before you fill your prescriptions.
- ▼ **Quantity limits:** Coverage may be limited to how much medication you can get during a specified period of time, typically based on a 30-day period.
- ▼ **Step therapy:** This process applies to certain drugs and encourages you to try less costly but equally effective drugs before the plan covers another drug.

## Mail order prescriptions

BSW SeniorCare Advantage Select Rx Assist offers convenient mail order service, too. You'll benefit from:

- ▼ Three-month supplies of your medications with the option of automatic refills
- ▼ Free standard shipping
- ▼ Telephone access to pharmacists 24 hours a day, 7 days a week
- ▼ Helpful reminders to take or refill your medications



Visit [BSWHealthPlan.com/Medicare](https://www.BSWHealthPlan.com/Medicare) to view the formulary (drug list) and pharmacy directory.

\*If you do not qualify for Extra Help, find information on other plans at [MyBSWMedicare.com](https://www.MyBSWMedicare.com) or contact your local agent.

## What to expect after enrollment

### Extra Help

If you qualify for Extra Help, you will receive information regarding Low Income Subsidy within 7 days of verified enrollment.

### Confirmation

You will receive an Acknowledgment and Confirmation of Enrollment letter within 7 days of enrollment. This is also the confirmation that Medicare has approved your enrollment form. Be sure to continue your current coverage until your BSW SeniorCare Advantage Select Rx Assist plan becomes effective.

### A new member kit

After enrollment confirmation, your New Member Kit will be sent to you. This kit will include your Benefits of Membership Guide that provides details about your coverage, a Health Risk Assessment (HRA), important plan contact information and more.

### Your member ID card

Within 7-10 business days of your enrollment, you will receive your member ID card. Use your member ID card to access benefits.

### A welcome call

Within 30 days of enrollment, you will receive a phone call from our member engagement team to welcome you and answer any questions you may have. We also will discuss how to schedule your annual wellness visit.

### An over-the-counter allowance card

You will receive your over-the-counter allowance card in the mail within 30 days of enrollment. The card will be ready for use as soon as you receive it in the mail. Make sure to keep your card after use, as it will be reloaded with funds on a quarterly basis.

Speak to a Licensed Insurance Agent [1.800.782.5068](tel:1.800.782.5068)/TTY: 711

# Three simple ways to enroll

## 1. Enroll online. [BSWHealthPlan.com/Medicare](https://BSWHealthPlan.com/Medicare)

This is a secure website, so any information you provide is kept confidential.

## 2. Enroll by phone. 1.800.782.5068/TTY: 711

Oct. 1 - March 31: 7 days a week,  
8 AM to 8 PM. Closed on major holidays.

April 1 - Sept. 30: Monday-Friday,  
8 AM to 5 PM. Closed on major holidays.

## 3. Fill out an application. *(included within this guide)*

- A. Select your plan choice at the top of the form.
- B. Provide information from your Medicare card as requested on the form. DO NOT send your Medicare card to us.
- C. Sign and date the enrollment form. Your signature is required to process your enrollment request.
- D. Return your application in one of three ways:

**Email:** [MedicareEnrollment@BSWHealth.org](mailto:MedicareEnrollment@BSWHealth.org)

**Mail:** Place each page of the completed and signed enrollment form into the postage-paid return envelope included in this guide.

**Fax:** 1.254.298.3334

Refer to Page 2 in this guide for information on how to qualify for BSW SeniorCare Advantage Select Rx Assist and Page 1 to learn how to qualify for Extra Help.

Medicare beneficiaries may also enroll in a BSW SeniorCare Advantage plan through the CMS Medicare Online Enrollment Center located at [medicare.gov](https://www.medicare.gov).

# Summary of Benefits

## Central Texas HMO-POS

Value-Based Insurance Design (VBID)

/// THE POWER TO LIVE BETTER



**This is a summary of drug and health services covered in the BSW SeniorCare Advantage HMO-POS plan, offered by Baylor Scott & White Health Plan.**

**Summary of Benefits**

**January 1, 2024 - December 31, 2024**

BSW SeniorCare Advantage HMO-POS is offered by Baylor Scott & White Health Plan, a Medicare Advantage organization with a Medicare contract. Enrollment in BSW SeniorCare Advantage depends on contract renewal with Medicare.

This booklet gives you a summary of what we cover and what you pay. It does not list every service that we cover or list every limitation or exclusion. To get a complete list of services we cover, refer to the *Evidence of Coverage*, available on our website at [BSWHealthPlan.com/Medicare](https://www.bswhealthplan.com/Medicare) by October 15, 2023.

**Tips for comparing your Medicare choices**

This Summary of Benefits gives you a summary of what BSW SeniorCare Advantage HMO-POS covers and what you pay.

- If you want to compare our plan with other Medicare plans, ask the other plans for their Summary of Benefits booklets. Or, use the Medicare Plan Finder on <https://www.medicare.gov>.
- If you want to know more about the coverage and costs of Original Medicare, look in your current “**Medicare & You**” handbook. View it online at <https://www.medicare.gov> or get a copy by calling 1-800-MEDICARE (1-800-633-4227), 24 hours a day, 7 days a week. TTY users should call 1-877-486-2048.

**Things to know about BSW SeniorCare Advantage HMO-POS**

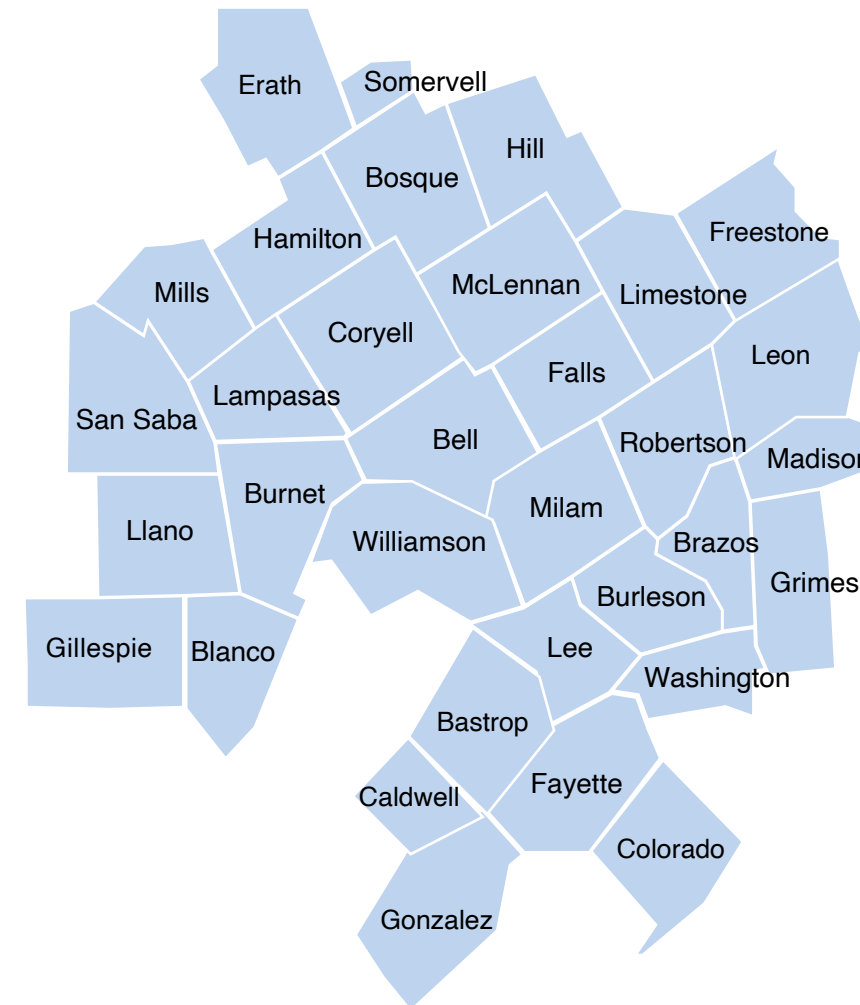
- If you are a member of this plan, you can call us toll free at 1-866-334-3141 or TTY 711, October 1 through March 31 from 7 a.m. – 8 p.m., seven days a week (excluding major holidays); and April 1 through September 30 from 7 a.m. – 8 p.m., Monday through Friday (excluding major holidays).
- If you are not a member of this plan, you can call us toll free at 1-800-782-5068 or TTY 711, October 1 through March 31 from 8 a.m. – 8 p.m., seven days a week (excluding major holidays); and April 1 through September 30 from 8 a.m. – 5 p.m., Monday through Friday (excluding major holidays).
- Our website: [BSWHealthPlan.com/Medicare](https://www.bswhealthplan.com/Medicare)

This document is available in other formats such as large print. The document may be available in a non-English language.

**Who can join?**

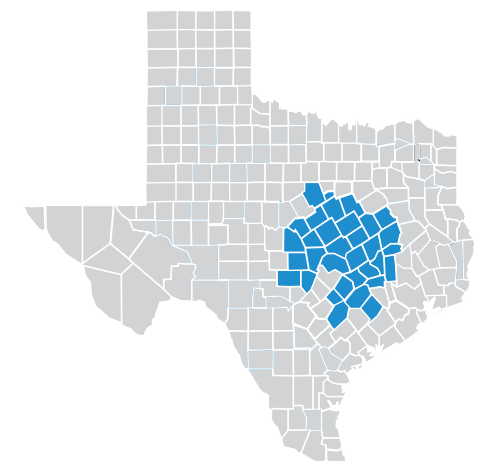
To join BSW SeniorCare Advantage HMO-POS, you must have Medicare Part A and Medicare Part B, and live in our service area. Our service area includes these counties in Texas: Bastrop, Bell, Blanco, Bosque, Brazos, Burleson, Burnet, Caldwell, Colorado, Coryell, Erath, Falls, Fayette, Freestone, Gillespie, Gonzales, Grimes, Hamilton, Hill, Lampasas, Lee, Leon, Limestone, Llano, McLennan, Madison, Milam, Mills, Robertson, San Saba, Somervell, Washington, and Williamson.

# What is the service area for Central Texas BSW SeniorCare Advantage HMO-POS?



**The counties in the service area are listed below:**

Bastrop, Bell, Blanco, Bosque, Brazos, Burleson, Burnet, Caldwell, Colorado, Coryell, Erath, Falls, Fayette, Freestone, Gillespie, Gonzales, Grimes, Hamilton, Hill, Lampasas, Lee, Leon, Limestone, Llano, Madison, McLennan, Milam, Mills, Robertson, San Saba, Somervell, Washington, Williamson





**Which doctors, hospitals, and pharmacies can I use?**

BSW SeniorCare Advantage HMO-POS has a network directory of doctors, hospitals, pharmacies, and other providers that can be found on our website at [BSWHealthPlan.com/Medicare](http://BSWHealthPlan.com/Medicare). You must use network providers and pharmacies for covered services, unless authorized by the Plan.

**What do we cover?**

Like all Medicare health plans, we cover everything that Original Medicare covers – and more.

- Our plan members get all of the benefits covered by Original Medicare. For some of these benefits, you may pay more in our plan than you would in Original Medicare. For others, you pay less.
- Our plan members also get more than what is covered by Original Medicare. Some of the extra benefits are outlined in this booklet.
- BSW SeniorCare Advantage Select Rx Assist (HMO-POS) is designed for individuals who receive extra help. Extra Help provides premium and copay assistance to low-income Medicare beneficiaries. BSW SeniorCare Advantage Select Rx Assist (HMO-POS) offers wellness and healthcare planning with health assessments, care management programs, in-home assessments, and annual wellness visits.

BSW SeniorCare Advantage HMO-POS covers Medicare Part B and Part D drugs. Certain limitations may apply.

Premiums and Benefits	BSW SeniorCare Advantage Select Rx Assist (HMO-POS)
<p><b>Monthly Plan Premium</b> You must continue to pay your Medicare Part B Premium.</p> <p><b>Without Extra Help</b></p> <p><b>With Extra Help</b></p>	<p>You pay \$28.40 per month.</p> <p>You pay \$0 per month.</p>
<b>Deductible</b>	You pay \$0.
<b>Maximum Out-of-Pocket Responsibility (does not include prescription drugs)</b>	You pay \$5,800 annually.
<b>Inpatient Hospital*</b>	Days 1 - 6: \$325 copay each day per stay. Days 7 - 90: \$0 copay each day per stay.
<p><b>Outpatient Hospital*</b></p> <p><b>Ambulatory Surgery Center</b></p> <p><b>Outpatient Hospital Services</b></p>	<p>You pay \$250 copay per visit.</p> <p>You pay \$325 copay per visit.</p>
<p><b>Doctor Visits</b></p> <p><b>Primary Care Providers</b></p> <p><b>Specialist</b></p>	<p>You pay \$0 copay per visit.</p> <p>You pay \$25 copay per visit.</p>
<b>Preventive Care</b>	You pay \$0 copay.
<p><b>Emergency Care</b> If you are admitted to the hospital within 24 hours, for the same condition, the copay is waived.</p>	You pay \$90 copay per visit.
<p><b>Urgently Needed Services</b> If you are admitted to the hospital within 24 hours, for the same condition, the copay is waived.</p>	You pay \$50 copay per visit.

\*Prior Authorization is required.

Premiums and Benefits	BSW SeniorCare Advantage Select Rx Assist (HMO-POS)
<b>Diagnostic Services/Labs/Imaging*</b>  <b>Diagnostic Tests and Procedures</b>  <b>Lab Services</b>  <b>Diagnostic Radiology Services (e.g. MRI, CAT Scan)</b>  <b>Outpatient X-Rays</b>	<p>You pay \$0 copay.</p> <p>You pay \$0 copay.</p> <p>You pay \$75 - \$300 copay.</p> <p>You pay \$0 copay.</p>
<b>Hearing Services</b>  <b>Medicare-covered Hearing Exam</b>  <b>Routine Hearing Exam</b> Limited to one exam each year.  <b>Hearing Aids</b>	<p>You pay \$40 copay per Medicare-covered hearing exam.</p> <p>You pay \$0 copay per exam.</p> <p>\$1,500 allowance toward the purchase of hearing aids every three years.</p>
<b>Dental Services</b>  <b>Preventive Dental</b>  <b>Oral Exams:</b> One exam every six months. <b>Prophylaxis (Cleaning):</b> One cleaning every six months. <b>Dental X-Rays:</b> One full mouth X-ray every 60 months. One bite-wing X-ray every 12 months.  <b>Yearly Benefit Maximum:</b>  <b>Comprehensive Dental Services</b>  <b>Non-routine Services:</b> One non-routine service every six months. 0% cost-sharing for problem-focused urgent or emergent exam and periapical X-rays (problem-focused X-rays). Other services rendered, such as fillings, endodontics services, and periodontics are covered at 50%.	<b>In-Network and Out-of-Network Combined</b>  <p>\$0 copay for each preventive oral exam.</p> <p>\$0 copay for each preventive cleaning.</p> <p>\$0 copay for each preventive X-ray.</p> <p>\$3,500 for all preventive and comprehensive dental services.</p> <p>0% - 50% coinsurance for each non-routine service.</p>

\*Prior Authorization is required.

Premiums and Benefits	BSW SeniorCare Advantage Select Rx Assist (HMO-POS)
<b>Dental Services (continued)</b>  <b>Diagnostic Services:</b> Up to eight periapical X-rays per visit.  <b>Restorative Services:</b> One set of dentures every five years covered at 100%. One filling every 24 months covered at 100%. One crown/inlays/onlays/bridges/implants (one per tooth position) every 10 years covered at 50%.  <b>Endodontics:</b> One root canal one per tooth per lifetime.  <b>Periodontics:</b> One periodontal surgery every 36 months. Periodontal maintenance up to four times every calendar year. One scaling and root planing every 24 months.  <b>Extractions:</b> Unlimited.  <b>Prosthodontics, Other Oral/Maxillofacial Surgery, Other Services:</b> One set of dentures through prosthodontist every five calendar years covered at 100%. Bridges covered through prosthodontist once every 10 calendar years at 50%.  Benefits for dental services are administered and paid by Metropolitan Life Insurance Company. Exclusions and limitations apply. See the Evidence of Coverage for full details on the dental benefit.  If a covered service is performed by an out-of-network dentist, we will base the benefit on the covered percentage of the maximum allowed charge.	<p>\$0 copay for each diagnostic service.</p> <p>0% - 50% coinsurance for each restorative service.</p> <p>50% coinsurance for each endodontics service.</p> <p>50% coinsurance for each periodontics service.</p> <p>\$0 copay for each extraction service.</p> <p>0% - 50% coinsurance for each prosthodontics and other oral/maxillofacial surgery service.</p>

\*Prior Authorization is required.

Premiums and Benefits	BSW SeniorCare Advantage Select Rx Assist (HMO-POS)
<p><b>Dental Services (continued)</b></p> <p>Out-of-network dentists may charge more than the maximum allowed charge. If an out-of-network dentist performs a covered service, you will be responsible for paying:</p> <ul style="list-style-type: none"> <li>any other part of the maximum allowed charge for which we do not pay benefits; and</li> <li>any amount in excess of the maximum allowed charge charged by the out-of-network dentist.</li> </ul>	
<p><b>Vision Services</b></p> <p><b>Eyewear</b></p> <p><b>Routine Eye Exam</b></p>	<p>\$150 allowance toward the purchase of eyewear each year.</p> <p>The eyewear limit applies to all eyewear types including glasses, frames, lenses, contacts.</p> <p>You pay \$0 copay for one routine eye exam per year.</p>
<p><b>Mental Health Services</b></p> <p><b>Inpatient*</b></p> <p><b>Outpatient Individual or Group Therapy</b></p>	<p>Days 1 - 5: \$318 copay each day per stay. Days 6 - 90: \$0 copay each day per stay.</p> <p>You pay \$30 copay per visit.</p>
<p><b>Skilled Nursing Facility (SNF) Care*</b></p>	<p>Days 1 - 20: \$0 copay each day. Days 21 - 100: \$200 copay each day.</p>
<p><b>Physical Therapy</b></p> <p><b>Occupational Therapy</b></p> <p><b>Physical Therapy and Speech and Language Therapy *</b></p>	<p>You pay \$35 copay per visit.</p> <p>You pay \$35 copay per visit.</p>
<p><b>Ambulance Service</b></p> <p><b>Ground Ambulance</b></p> <p><b>Air Ambulance</b></p>	<p>You pay \$300 copay.</p> <p>You pay \$300 copay.</p>

\*Prior Authorization is required.

Premiums and Benefits	BSW SeniorCare Advantage Select Rx Assist (HMO-POS)
<p><b>Transportation (Additional Routine)</b></p>	<p>You pay \$0 copay for up to 24 one-way trips per year, or 12 round trips up to 50 miles each way.</p>
<p><b>Medicare Part B Prescription Drugs</b></p> <p><b>Chemotherapy Drugs</b></p> <p>Prior Authorization may be required.</p> <p>Step Therapy may be required.</p> <p><b>Other Part B Drugs</b></p> <p>Prior Authorization may be required.</p> <p>Step Therapy may be required.</p> <p>You pay no more than \$35 for a one-month supply of covered insulin when used in an insulin pump.</p>	<p>You pay 0% - 20% coinsurance.</p> <p>You pay 0% - 20% coinsurance.</p>
<p><b>Wellness Program (e.g. fitness)</b></p>	<p>Silver and Fit is a fitness program that provides members with a complimentary gym membership at participating gyms in your area. This benefit is at no additional cost to you.</p>
<p><b>Home Health Care*</b></p>	<p>You pay \$0 copay per visit.</p>
<p><b>Foot Care (Podiatry Services)</b></p> <p>Medicare-covered foot exams and treatment.</p>	<p>You pay \$40 copay per visit.</p>
<p><b>Telehealth Services - PCP, Specialist, and Individual or Group Sessions for Psychiatric Services</b></p>	<p>You pay \$0 copay per visit.</p>
<p><b>Opioid Treatment Service*</b></p>	<p>You pay \$45 copay per visit.</p>
<p><b>Meal Benefit</b></p>	<p>You pay \$0 copay for 14 meals per hospital discharge to home; limit three discharges per year.</p>
<p><b>Over-the-Counter Items</b></p>	<p>Quarterly \$50 swipe and save allowance toward over-the-counter items such as medicine, or products related to eye care, wellness, or personal care.</p>

\*Prior Authorization is required.

Premiums and Benefits	BSW SeniorCare Advantage Select Rx Assist (HMO-POS)
<b>Worldwide Emergency/Urgent Services</b>	
<b>Emergency Care</b>	You pay \$0 copay per visit.
<b>Urgent Care</b>	You pay \$0 copay per visit.
<b>Emergency/Urgent Transportation</b>	You pay \$0 copay per trip.
<b>Yearly Benefit Maximum</b>	\$5,000 maximum plan benefit coverage amount.

**\*Prior Authorization is required.**

Plans may offer supplemental benefits in addition to Part C benefits and Part D benefits.

#### Referrals and Authorizations

Referrals from your primary provider for services are not required; however, many services require prior authorization. For complete details, refer to the *Evidence of Coverage*, available on our website at [BSWHealthPlan.com/Medicare](http://BSWHealthPlan.com/Medicare) by October 15, 2023.

Outpatient Prescription Drugs		
BSW SeniorCare Advantage Select Rx Assist (HMO-POS)		
Deductible		
Without Extra Help	\$545	
With Extra Help	\$0	
<b>Initial Coverage</b> (after you pay your deductible, if applicable)	You stay in this stage until your yearly drug costs total \$5,030. Total yearly drug costs are the total drug costs paid by both you and your Part D plan. You may get your drugs at network retail pharmacies and mail order pharmacies.	
	Standard Retail 30-Day Supply	Mail Order 90-Day Supply
Without Extra Help	25% coinsurance.	25% coinsurance.
With Extra Help	\$0	\$0
<b>Coverage Gap</b>	<p><b>For members without Extra Help:</b> After your total drug costs (including what our plan has paid and what you have paid) reach \$5,030, you will pay no more than 25% coinsurance for generic drugs or 25% coinsurance for brand name drugs.</p> <p><b>For members with Extra Help:</b> You will pay \$0 for all drugs.</p>	
<b>Catastrophic Coverage</b>	After your yearly out-of-pocket drug costs (including drugs purchased through your retail pharmacy and through mail order) reach \$8,000, you pay \$0.	

#### For members without Extra Help:

Most adult Part D vaccines are covered at no cost to you.  
You pay no more than \$35 for a one-month supply of each covered insulin.

#### For members with Extra Help:

Even if you haven't paid your deductible, you won't pay more than \$35 for a one-month supply of each covered insulin product regardless of the cost-sharing tier and no cost for most adult Part D vaccines.

#### Information on Your Prescription Benefit

You can view the formulary (drug list) and any formulary restrictions on our website. To view the formulary (drug list) and pharmacy directory, go to [BSWHealthPlan.com/Medicare](http://BSWHealthPlan.com/Medicare).

We encourage you to let us know right away, if after becoming a member you have questions, concerns, or problems related to your prescription benefits. For assistance, call our Customer Service Department at 1-866-334-3141 (TTY: 711), October 1 through March 31 from 7 a.m. – 8 p.m., seven days a week (excluding major holidays); and April 1 through September 30 from 7 a.m. – 8 p.m. Monday through Friday (excluding major holidays).

## Pre-Enrollment Checklist

Before making an enrollment decision, it is important that you fully understand our benefits and rules. If you have any questions, you can call and speak to a customer service representative at 1-866-334-3141 (TTY: 711) October 1 through March 31 from 7 a.m. – 8 p.m., seven days a week (excluding major holidays); and April 1 through September 30 from 7 a.m. – 8 p.m. Monday through Friday (excluding major holidays).

### Understand the Benefits

- The Evidence of Coverage (EOC) provides a complete list of all coverage and services. It is important to review plan coverage, costs, and benefits before you enroll. Visit [BSWHealthPlan.com/Medicare](https://www.bswhealthplan.com/Medicare) or call 1-866-334-3141 to view a copy of the EOC.
- Review the provider directory (or ask your doctor) to make sure the doctors you see now are in the network. If they are not listed, it means you will likely have to select a new doctor.
- Review the pharmacy directory to make sure the pharmacy you use for any prescription medicine is in the network. If the pharmacy is not listed, you will likely have to select a new pharmacy for your prescriptions.
- Review the formulary to make sure your drugs are covered.

### Understand Important Rules

- You must continue to pay your Medicare Part B premium. This premium is normally taken out of your Social Security check each month.
- Benefits, premiums and/or copayments/coinsurance may change on January 1, 2025.
- Except in emergency or urgent situations, we do not cover services by out-of-network providers (doctors who are not listed in the provider directory).
- Effect on Current Coverage. If you are currently enrolled in a Medicare Advantage plan, your current Medicare Advantage healthcare coverage will end once your new Medicare Advantage coverage starts. If you have Tricare, your coverage may be affected once your new Medicare Advantage coverage starts. Please contact Tricare for more information. If you have a Medigap plan, once your Medicare Advantage coverage starts, you may want to drop your Medigap policy because you will be paying for coverage you cannot use.

BSW SeniorCare Advantage HMO-POS is offered by Baylor Scott & White Health Plan, a Medicare Advantage organization with a Medicare contract. Enrollment in BSW SeniorCare Advantage depends on contract renewal with Medicare.

You must continue to pay your Medicare Part B premium.

**SCOPE OF SALES APPOINTMENT  
CONFIRMATION FORM**

Thank you for agreeing to meet with a licensed insurance agent who is either employed by or contracted with Baylor Scott & White Health Plan. During your meeting, you are not required to enroll in a plan. The sales agent will not automatically enroll you in any plan you may discuss. Your current or future Medicare enrollment status will not be impacted.

Please initial below which type of product(s) you want the agent to discuss.

Medicare Advantage Plans with Part D Prescription Drug Plans

Medicare Advantage Plans without Part D Prescription Drug Plans

**Beneficiary or Authorized Representative signature, phone number and signature date:**

\_\_\_\_\_ (\_\_\_\_\_) \_\_\_\_\_  
 Signature Phone Number Signature Date

**If you are the authorized representative, please sign above and print below:**

\_\_\_\_\_  
 Representative's Name (printed) Your Relationship to the Beneficiary

**To be completed by Agent:**

If the form is signed by the beneficiary at time of appointment, provide an explanation why SOA was not signed prior to meeting.

\_\_\_\_\_  
 Beneficiary Name Beneficiary Phone

\_\_\_\_\_  
 Beneficiary Address

\_\_\_\_\_  
 Initial Method of Contact (indicate if beneficiary was a walk-in)

\_\_\_\_\_  
 Where the walk-in took place (i.e., agent's office)

\_\_\_\_\_  
 Plan(s) the agent represented during this meeting

\_\_\_\_\_  
 Agent Name Agent Phone

\_\_\_\_\_  
 Date Appointment Completed Agent Writing # or NPN

\_\_\_\_\_  
 Agent Signature

**SCOPE OF SALES APPOINTMENT  
CONFIRMATION FORM**



**Plan Descriptions**

**Medicare Advantage Plans with Part D Prescription Drug Plans**

- **Medicare Health Maintenance Organization (HMO) Plan** — A Medicare Advantage plan that provides all Original Medicare Part A and Part B health coverage and includes Part D prescription drug coverage. Except for emergency and urgent care situations, you can only get your care from doctors or hospitals in the plan’s network.
- **Health Maintenance Organization (HMO) with added Point of Service (POS) benefits Plan** — An HMO plan that offers an additional, mandatory supplemental benefit, that allows the enrollee the option of receiving specified services outside of the plan’s provider network.
- **Medicare Preferred Provider Organization (PPO) Plan** — A Medicare Advantage plan that provides all Original Medicare Part A and Part B health coverage and includes Part D prescription drug coverage. PPOs have network doctors and hospitals, but you can also use out-of-network providers, usually at a higher cost.

**Medicare Advantage Plans without Part D Prescription Drug Plans**

- **Medicare Health Maintenance Organization (HMO) Plan** — A Medicare Advantage plan that provides all Original Medicare Part A and Part B health coverage but does not include Part D prescription drug coverage. Except in emergencies, you can only get your care from doctors or hospitals in the plan’s network.
- **Health Maintenance Organization (HMO) with added Point of Service (POS) benefits Plan** - An HMO plan that offers an additional, mandatory supplemental benefit, that allows the enrollee the option of receiving specified services outside of the plan’s provider network.

**Agent Reminders:**

The Scope of Appointment (SOA) is valid for 12 months following the date of beneficiary's signature date or the date of the beneficiary's initial request for information.

The SOA should be completed and agreed upon with the beneficiary at least 48 hours prior to the scheduled personal marketing, except for:

- SOAs that are completed during the last four days of a valid election period for the beneficiary.
- Unscheduled in person meetings (walk-ins) initiated by the beneficiary.

SOA distribution is prohibited at educational events.

SOA documentation is subject to CMS record retention requirements of 10 years.

**SCOPE OF SALES APPOINTMENT  
CONFIRMATION FORM**



Thank you for agreeing to meet with a licensed insurance agent who is either employed by or contracted with Baylor Scott & White Health Plan. During your meeting, you are not required to enroll in a plan. The sales agent will not automatically enroll you in any plan you may discuss. Your current or future Medicare enrollment status will not be impacted.

Please initial below which type of product(s) you want the agent to discuss.	
_____	Medicare Advantage Plans with Part D Prescription Drug Plans
_____	Medicare Advantage Plans without Part D Prescription Drug Plans

**Beneficiary or Authorized Representative signature, phone number and signature date:**

_____	(____) _____	_____
Signature	Phone Number	Signature Date

**If you are the authorized representative, please sign above and print below:**

_____	_____
Representative’s Name ( <i>printed</i> )	Your Relationship to the Beneficiary

**To be completed by Agent:**

If the form is signed by the beneficiary at time of appointment, provide an explanation why SOA was not signed prior to meeting.

_____	_____
Beneficiary Name	Beneficiary Phone

\_\_\_\_\_  
Beneficiary Address

\_\_\_\_\_  
Initial Method of Contact (indicate if beneficiary was a walk-in)

\_\_\_\_\_  
Where the walk-in took place (i.e., agent’s office)

\_\_\_\_\_  
Plan(s) the agent represented during this meeting

_____	_____
Agent Name	Agent Phone

_____	_____
Date Appointment Completed	Agent Writing # or NPN

\_\_\_\_\_  
Agent Signature

# SCOPE OF SALES APPOINTMENT CONFIRMATION FORM



## Plan Descriptions

### Medicare Advantage Plans with Part D Prescription Drug Plans

- **Medicare Health Maintenance Organization (HMO) Plan** — A Medicare Advantage plan that provides all Original Medicare Part A and Part B health coverage and includes Part D prescription drug coverage. Except for emergency and urgent care situations, you can only get your care from doctors or hospitals in the plan's network.
- **Health Maintenance Organization (HMO) with added Point of Service (POS) benefits Plan** — An HMO plan that offers an additional, mandatory supplemental benefit, that allows the enrollee the option of receiving specified services outside of the plan's provider network.
- **Medicare Preferred Provider Organization (PPO) Plan** — A Medicare Advantage plan that provides all Original Medicare Part A and Part B health coverage and includes Part D prescription drug coverage. PPOs have network doctors and hospitals, but you can also use out-of-network providers, usually at a higher cost.

### Medicare Advantage Plans without Part D Prescription Drug Plans

- **Medicare Health Maintenance Organization (HMO) Plan** — A Medicare Advantage plan that provides all Original Medicare Part A and Part B health coverage but does not include Part D prescription drug coverage. Except in emergencies, you can only get your care from doctors or hospitals in the plan's network.
- **Health Maintenance Organization (HMO) with added Point of Service (POS) benefits Plan** - An HMO plan that offers an additional, mandatory supplemental benefit, that allows the enrollee the option of receiving specified services outside of the plan's provider network.

## Agent Reminders:

The Scope of Appointment (SOA) is valid for 12 months following the date of beneficiary's signature date or the date of the beneficiary's initial request for information.

The SOA should be completed and agreed upon with the beneficiary at least 48 hours prior to the scheduled personal marketing, except for:

- SOAs that are completed during the last four days of a valid election period for the beneficiary.
- Unscheduled in person meetings (walk-ins) initiated by the beneficiary.

SOA distribution is prohibited at educational events.

SOA documentation is subject to CMS record retention requirements of 10 years.

## INDIVIDUAL ENROLLMENT REQUEST FORM TO ENROLL IN A MEDICARE ADVANTAGE PLAN

### Who can use this form?

People with Medicare who want to join a Medicare Advantage Plan

### To join a plan, you must:

- Be a United States citizen or be lawfully present in the U.S.
- Live in the plan's service area

**Important:** To join a Medicare Advantage Plan, you must also have both:

- Medicare Part A (Hospital Insurance)
- Medicare Part B (Medical Insurance)

### When do I use this form?

You can join a plan:

- Between October 15–December 7 each year (for coverage starting January 1)
- Within 3 months of first getting Medicare
- In certain situations where you're allowed to join or switch plans

Visit Medicare.gov to learn more about when you can sign up for a plan.

### What do I need to complete this form?

- Your Medicare Number (the number on your red, white, and blue Medicare card)
- Your permanent address and phone number

**Note:** You must complete all items in Section 1. The items in Section 2 are optional – you can't be denied coverage because you don't fill them out.

### Reminders:

- If you want to join a plan during fall open enrollment (October 15–December 7), the plan must get your completed form by December 7.
- Your plan will send you a bill for the plan's premium. You can choose to sign up to have your premium payments deducted from your bank account or your monthly Social Security (or Railroad Retirement Board) benefit.

### What happens next?

Send your completed and signed form to:  
Baylor Scott & White Health Plan  
1206 W. Campus Drive  
Temple, TX 76502

Once they process your request to join, they'll contact you.

### How do I get help with this form?

Call Baylor Scott & White Health Plan at 1-800-782-5068. TTY users can call 711.

Or, call Medicare at 1-800-MEDICARE (1-800-633-4227). TTY users can call 1-877-486-2048.

**En español:** Llame a Baylor Scott & White Health Plan al 1-800-782-5068/TTY 711 o a Medicare gratis al 1-800-633-4227 y oprima el 2 para asistencia en español y un representante estará disponible para asistirle.

### Individuals experiencing homelessness

- If you want to join a plan but have no permanent residence, a Post Office Box, an address of a shelter or clinic, or the address where you receive mail (e.g., social security checks) may be considered your permanent residence address.

According to the Paperwork Reduction Act of 1995, no persons are required to respond to a collection of information unless it displays a valid OMB control number. The valid OMB control number for this information collection is 0938-1378. The time required to complete this information is estimated to average 20 minutes per response, including the time to review instructions, search existing data resources, gather the data needed, and complete and review the information collection. If you have any comments concerning the accuracy of the time estimate(s) or suggestions for improving this form, please write to: CMS, 7500 Security Boulevard, Attn: PRA Reports Clearance Officer, Mail Stop C4-26-05, Baltimore, Maryland 21244-1850.

#### IMPORTANT

Do not send this form or any items with your personal information (such as claims, payments, medical records, etc.) to the PRA Reports Clearance Office. Any items we get that aren't about how to improve this form or its collection burden (outlined in OMB 0938-1378) will be destroyed. It will not be kept, reviewed, or forwarded to the plan. See "What happens next?" on this page to send your completed form to the plan.



**Section 1 – All fields on this page are required (unless marked optional)**

Select the plan you want to join:  
 BSW SeniorCare Advantage HMO-POS Select Rx Assist **\$0 with** Extra Help (Low-Income Subsidy)  
 BSW SeniorCare Advantage HMO-POS Select Rx Assist **\$28.40 without** Extra Help

FIRST Name: \_\_\_\_\_ LAST Name: \_\_\_\_\_ Optional: Middle Initial: \_\_\_\_\_

Birth Date: (MM/DD/YYYY) ( / / ) Sex:  Male  Female Phone Number: ( )

Permanent residence street address (Don't enter a PO Box): \_\_\_\_\_

City: \_\_\_\_\_ Optional: County: \_\_\_\_\_ State: \_\_\_\_\_ ZIP Code: \_\_\_\_\_

Mailing address, if different from your permanent address (PO Box allowed)  
 Street Address: \_\_\_\_\_ City: \_\_\_\_\_ State: \_\_\_\_\_ ZIP Code: \_\_\_\_\_

**Your Medicare information:**

**Medicare Number:** \_\_\_\_\_

**Answer these important questions:**

Will you have other prescription drug coverage (like VA, TRICARE) in addition to BSW SeniorCare Advantage?  Yes  No  
 Name of other coverage: \_\_\_\_\_ Member number for this coverage: \_\_\_\_\_ Group number for this coverage: \_\_\_\_\_

**IMPORTANT: Read and sign below:**

- I must keep both Hospital (Part A) and Medical (Part B) to stay in BSW SeniorCare Advantage.
- By joining this Medicare Advantage Plan, I acknowledge that BSW SeniorCare Advantage will share my information with Medicare, who may use it to track my enrollment, to make payments, and for other purposes allowed by Federal law that authorize the collection of this information (see Privacy Act Statement below). Your response to this form is voluntary. However, failure to respond may affect enrollment in the plan.
- I understand that I can be enrolled in only one MA plan at a time – and that enrollment in this plan will automatically end my enrollment in another MA plan (exceptions apply for MA PFFS, MA MSA plans).
- I understand that when my BSW SeniorCare Advantage coverage begins, I must get all of my medical and prescription drug benefits from BSW SeniorCare Advantage. Benefits and services provided by BSW SeniorCare Advantage and contained in my BSW SeniorCare Advantage "Evidence of Coverage" document (also known as a member contract or subscriber agreement) will be covered. Neither Medicare nor BSW SeniorCare Advantage will pay for benefits or services that are not covered.
- The information on this enrollment form is correct to the best of my knowledge. I understand that if I intentionally provide false information on this form, I will be disenrolled from the plan.
- I understand that my signature (or the signature of the person legally authorized to act on my behalf) on this application means that I have read and understand the contents of this application. If signed by an authorized representative (as described above), this signature certifies that:
  - 1) This person is authorized under State law to complete this enrollment, and
  - 2) Documentation of this authority is available upon request by Medicare.

**Signature:** \_\_\_\_\_ **Today's date:** \_\_\_\_\_

If you're the authorized representative, sign above and fill out these fields:

Name: \_\_\_\_\_ Address: \_\_\_\_\_

Phone number: \_\_\_\_\_ Relationship to enrollee: \_\_\_\_\_

Name: \_\_\_\_\_ Date: \_\_\_\_\_

**Section 2 - All fields on this page are optional**

**Answering these questions is your choice. You can't be denied coverage because you don't fill them out.**

Are you Hispanic, Latino/a, or Spanish origin? Select all that apply.

- |   |  |
|---|--|
| <input type="checkbox"/> No, not of Hispanic, Latino/a, or Spanish origin   | <input type="checkbox"/> Yes, Mexican, Mexican American, Chicano/a |
| <input type="checkbox"/> Yes, Puerto Rican                                  | <input type="checkbox"/> Yes, Cuban                                |
| <input type="checkbox"/> Yes, another Hispanic, Latino/a, or Spanish origin |  |
| <input type="checkbox"/> <b>I choose not to answer.</b>                     |  |

What's your race? Select all that apply.

- |   |   |
|---|---|
| <input type="checkbox"/> American Indian or Alaska Native | <input type="checkbox"/> Black or African American      |
| Asian:  | Native Hawaiian and Pacific Islander:                   |
| <input type="checkbox"/> Asian Indian                     | <input type="checkbox"/> Guamanian or Chamorro          |
| <input type="checkbox"/> Chinese                          | <input type="checkbox"/> Native Hawaiian                |
| <input type="checkbox"/> Filipino                         | <input type="checkbox"/> Samoan                         |
| <input type="checkbox"/> Japanese                         | <input type="checkbox"/> Other Pacific Islander         |
| <input type="checkbox"/> Korean                           | <input type="checkbox"/> White                          |
| <input type="checkbox"/> Vietnamese                       | <input type="checkbox"/> <b>I choose not to answer.</b> |
| <input type="checkbox"/> Other Asian                      |   |

Select one if you want us to send you information in a language other than English.

- Spanish

Select one if you want us to send you information in an accessible format.

- Large print

Please contact Baylor Scott & White Health Plan at 1-866-334-3141 (TTY: 711) if you need information in an accessible format other than what's listed above. Our office hours are:

**Oct. 1 - March 31:** 7 days a week, 7 AM to 8 PM. Closed on major holidays.

**April 1 - Sept. 30:** Monday-Friday, 7 AM to 8 PM. Closed on major holidays.

Do you work?  Yes  No

Does your spouse work?  Yes  No

List your Primary Care Physician (PCP), clinic, or health center:

Your email address:

Name: \_\_\_\_\_ Date: \_\_\_\_\_

**Section 2 - Continued**

**Paying your plan premiums (if applicable)**

You can pay your monthly plan premium (including any late enrollment penalty that you currently have or may owe)

- By mail; get a monthly bill.
- Electronic funds transfer (EFT) from your bank account each month. Please enclose a VOIDED check or provide the following:

Account holder name: \_\_\_\_\_

Bank routing number: \_\_\_\_\_ Bank account number: \_\_\_\_\_

Account type:  Checking  Savings

**You can also choose to pay your premium by having it automatically taken out of your**

- Social Security or  Railroad Retirement Board (RRB) benefit each month.

**If you have to pay a Part D-Income Related Monthly Adjustment Amount (Part D-IRMAA), you must pay this extra amount in addition to your plan premium.** The amount is usually taken out of your Social Security benefit, or you may get a bill from Medicare (or the RRB). DON'T pay Baylor Scott & White Health Plan the Part D-IRMAA

**Office Use Only:**

Agent Name: \_\_\_\_\_ NPN: \_\_\_\_\_

Agent Signature: \_\_\_\_\_ Date: \_\_\_\_\_

**Enrollment Period:**  IEP  AEP  SEP (type): \_\_\_\_\_  Not Eligible

Effective Date of Coverage: \_\_\_\_\_

**PRIVACY ACT STATEMENT**

The Centers for Medicare & Medicaid Services (CMS) collects information from Medicare plans to track beneficiary enrollment in Medicare Advantage (MA) Plans, improve care, and for the payment of Medicare benefits. Sections 1851 and 1860D-1 of the Social Security Act and 42 CFR §§ 422.50 and 422.60 authorize the collection of this information. CMS may use, disclose and exchange enrollment data from Medicare beneficiaries as specified in the System of Records Notice (SORN) "Medicare Advantage Prescription Drug (MARx)", System No. 09-70-0588. Your response to this form is voluntary. However, failure to respond may affect enrollment in the plan.

**Typically, you may enroll in a Medicare Advantage plan only during the annual enrollment period from October 15 through December 7 of each year.** There are exceptions that may allow you to enroll in a Medicare Advantage plan outside of this period.

Please read the following statements carefully and check the box if the statement applies to you. By checking any of the following boxes you are certifying that, to the best of your knowledge, you are eligible for an Enrollment Period. If we later determine that this information is incorrect, you may be disenrolled.

- I am new to Medicare.
- I am enrolled in a Medicare Advantage plan and want to make a change during the Medicare Advantage Open Enrollment Period (MA OEP).
- I recently moved outside of the service area for my current plan or I recently moved and this plan is a new option for me. I moved on (insert date)\_\_\_\_\_.
- I recently was released from incarceration. I was released on (insert date)\_\_\_\_\_.
- I recently returned to the United States after living permanently outside of the U.S. I returned to the U.S. on (insert date)\_\_\_\_\_.
- I recently obtained lawful presence status in the United States. I got this status on (insert date)\_\_\_\_\_.
- I recently had a change in my Medicaid (newly got Medicaid, had a change in level of Medicaid assistance, or lost Medicaid) on (insert date)\_\_\_\_\_.
- I recently had a change in my Extra Help paying for Medicare prescription drug coverage (newly got Extra Help, had a change in the level of Extra Help, or lost Extra Help) on (insert date)\_\_\_\_\_.
- I have both Medicare and Medicaid (or my state helps pay for my Medicare premiums) or I get Extra Help paying for my Medicare prescription drug coverage, but I haven't had a change.
- I am moving into, live in, or recently moved out of a Long-Term Care Facility (for example, a nursing home or long term care facility). I moved/will move into/out of the facility on (insert date)\_\_\_\_\_.
- I recently left a PACE program on (insert date)\_\_\_\_\_.
- I recently involuntarily lost my creditable prescription drug coverage (coverage as good as Medicare's). I lost my drug coverage on (insert date)\_\_\_\_\_.
- I am leaving employer or union coverage on (insert date)\_\_\_\_\_.
- I belong to a pharmacy assistance program provided by my state.
- My plan is ending its contract with Medicare, or Medicare is ending its contract with my plan.
- I was enrolled in a plan by Medicare (or my state) and I want to choose a different plan. My enrollment in that plan started on (insert date)\_\_\_\_\_.
- I was enrolled in a Special Needs Plan (SNP) but I have lost the special needs qualification required to be in that plan. I was disenrolled from the SNP on (insert date)\_\_\_\_\_.
- I was affected by an emergency or major disaster (as declared by the Federal Emergency Management Agency [FEMA]) or by a Federal, state or local government entity. One of the other statements here applied to me, but I was unable to make my enrollment request because of the disaster.

If none of these statements applies to you or you're not sure, please contact Baylor Scott & White Health Plan at 1-800-782-5068 (TTY users should call 711) to see if you are eligible to enroll. From Oct. 1 - March 31, we are open 7 days a week, 8 AM to 8 PM (closed on major holidays). From April 1 - Sept. 30, we are open Monday-Friday, 8 AM to 5 PM (closed on major holidays).



## INDIVIDUAL ENROLLMENT REQUEST FORM TO ENROLL IN A MEDICARE ADVANTAGE PLAN

### Who can use this form?

People with Medicare who want to join a Medicare Advantage Plan

### To join a plan, you must:

- Be a United States citizen or be lawfully present in the U.S.
- Live in the plan's service area

**Important:** To join a Medicare Advantage Plan, you must also have both:

- Medicare Part A (Hospital Insurance)
- Medicare Part B (Medical Insurance)

### When do I use this form?

You can join a plan:

- Between October 15–December 7 each year (for coverage starting January 1)
- Within 3 months of first getting Medicare
- In certain situations where you're allowed to join or switch plans

Visit [Medicare.gov](https://www.Medicare.gov) to learn more about when you can sign up for a plan.

### What do I need to complete this form?

- Your Medicare Number (the number on your red, white, and blue Medicare card)
- Your permanent address and phone number

**Note:** You must complete all items in Section 1. The items in Section 2 are optional – you can't be denied coverage because you don't fill them out.

### Reminders:

- If you want to join a plan during fall open enrollment (October 15–December 7), the plan must get your completed form by December 7.
- Your plan will send you a bill for the plan's premium. You can choose to sign up to have your premium payments deducted from your bank account or your monthly Social Security (or Railroad Retirement Board) benefit.

### What happens next?

Send your completed and signed form to:  
Baylor Scott & White Health Plan  
1206 W. Campus Drive  
Temple, TX 76502

Once they process your request to join, they'll contact you.

### How do I get help with this form?

Call Baylor Scott & White Health Plan at 1-800-782-5068. TTY users can call 711.

Or, call Medicare at 1-800-MEDICARE (1-800-633-4227). TTY users can call 1-877-486-2048.

**En español:** Llame a Baylor Scott & White Health Plan al 1-800-782-5068/TTY 711 o a Medicare gratis al 1-800-633-4227 y oprima el 2 para asistencia en español y un representante estará disponible para asistirle.

### Individuals experiencing homelessness

- If you want to join a plan but have no permanent residence, a Post Office Box, an address of a shelter or clinic, or the address where you receive mail (e.g., social security checks) may be considered your permanent residence address.

According to the Paperwork Reduction Act of 1995, no persons are required to respond to a collection of information unless it displays a valid OMB control number. The valid OMB control number for this information collection is 0938-1378. The time required to complete this information is estimated to average 20 minutes per response, including the time to review instructions, search existing data resources, gather the data needed, and complete and review the information collection. If you have any comments concerning the accuracy of the time estimate(s) or suggestions for improving this form, please write to: CMS, 7500 Security Boulevard, Attn: PRA Reports Clearance Officer, Mail Stop C4-26-05, Baltimore, Maryland 21244-1850.

#### IMPORTANT

Do not send this form or any items with your personal information (such as claims, payments, medical records, etc.) to the PRA Reports Clearance Office. Any items we get that aren't about how to improve this form or its collection burden (outlined in OMB 0938-1378) will be destroyed. It will not be kept, reviewed, or forwarded to the plan. See "What happens next?" on this page to send your completed form to the plan.

**Section 1 – All fields on this page are required (unless marked optional)**

Select the plan you want to join:  
 BSW SeniorCare Advantage HMO-POS Select Rx Assist **\$0 with** Extra Help (Low-Income Subsidy)  
 BSW SeniorCare Advantage HMO-POS Select Rx Assist **\$28.40 without** Extra Help

FIRST Name: \_\_\_\_\_ LAST Name: \_\_\_\_\_ Optional: Middle Initial: \_\_\_\_\_

Birth Date: (MM/DD/YYYY) ( / / ) Sex:  Male  Female Phone Number: ( )

Permanent residence street address (Don't enter a PO Box): \_\_\_\_\_

City: \_\_\_\_\_ Optional: County: \_\_\_\_\_ State: \_\_\_\_\_ ZIP Code: \_\_\_\_\_

Mailing address, if different from your permanent address (PO Box allowed)  
 Street Address: \_\_\_\_\_ City: \_\_\_\_\_ State: \_\_\_\_\_ ZIP Code: \_\_\_\_\_

**Your Medicare information:**

**Medicare Number:** — —

**Answer these important questions:**

Will you have other prescription drug coverage (like VA, TRICARE) in addition to BSW SeniorCare Advantage?  Yes  No  
 Name of other coverage: \_\_\_\_\_ Member number for this coverage: \_\_\_\_\_ Group number for this coverage: \_\_\_\_\_

**IMPORTANT: Read and sign below:**

- I must keep both Hospital (Part A) and Medical (Part B) to stay in BSW SeniorCare Advantage.
- By joining this Medicare Advantage Plan, I acknowledge that BSW SeniorCare Advantage will share my information with Medicare, who may use it to track my enrollment, to make payments, and for other purposes allowed by Federal law that authorize the collection of this information (see Privacy Act Statement below). Your response to this form is voluntary. However, failure to respond may affect enrollment in the plan.
- I understand that I can be enrolled in only one MA plan at a time – and that enrollment in this plan will automatically end my enrollment in another MA plan (exceptions apply for MA PFFS, MA MSA plans).
- I understand that when my BSW SeniorCare Advantage coverage begins, I must get all of my medical and prescription drug benefits from BSW SeniorCare Advantage. Benefits and services provided by BSW SeniorCare Advantage and contained in my BSW SeniorCare Advantage "Evidence of Coverage" document (also known as a member contract or subscriber agreement) will be covered. Neither Medicare nor BSW SeniorCare Advantage will pay for benefits or services that are not covered.
- The information on this enrollment form is correct to the best of my knowledge. I understand that if I intentionally provide false information on this form, I will be disenrolled from the plan.
- I understand that my signature (or the signature of the person legally authorized to act on my behalf) on this application means that I have read and understand the contents of this application. If signed by an authorized representative (as described above), this signature certifies that:
  - 1) This person is authorized under State law to complete this enrollment, and
  - 2) Documentation of this authority is available upon request by Medicare.

**Signature:** \_\_\_\_\_ **Today's date:** \_\_\_\_\_

If you're the authorized representative, sign above and fill out these fields:

Name: \_\_\_\_\_ Address: \_\_\_\_\_

Phone number: \_\_\_\_\_ Relationship to enrollee: \_\_\_\_\_

Section 2 - All fields on this page are optional	
<b>Answering these questions is your choice. You can't be denied coverage because you don't fill them out.</b>	
Are you Hispanic, Latino/a, or Spanish origin? Select all that apply.	
<input type="checkbox"/> No, not of Hispanic, Latino/a, or Spanish origin	<input type="checkbox"/> Yes, Mexican, Mexican American, Chicano/a
<input type="checkbox"/> Yes, Puerto Rican	<input type="checkbox"/> Yes, Cuban
<input type="checkbox"/> Yes, another Hispanic, Latino/a, or Spanish origin	
<input type="checkbox"/> <b>I choose not to answer.</b>	
What's your race? Select all that apply.	
<input type="checkbox"/> American Indian or Alaska Native	<input type="checkbox"/> Black or African American
Asian:	Native Hawaiian and Pacific Islander:
<input type="checkbox"/> Asian Indian	<input type="checkbox"/> Guamanian or Chamorro
<input type="checkbox"/> Chinese	<input type="checkbox"/> Native Hawaiian
<input type="checkbox"/> Filipino	<input type="checkbox"/> Samoan
<input type="checkbox"/> Japanese	<input type="checkbox"/> Other Pacific Islander
<input type="checkbox"/> Korean	<input type="checkbox"/> White
<input type="checkbox"/> Vietnamese	<input type="checkbox"/> <b>I choose not to answer.</b>
<input type="checkbox"/> Other Asian	
Select one if you want us to send you information in a language other than English.	
<input type="checkbox"/> Spanish	
Select one if you want us to send you information in an accessible format.	
<input type="checkbox"/> Large print	
Please contact Baylor Scott & White Health Plan at 1-866-334-3141 (TTY: 711) if you need information in an accessible format other than what's listed above. Our office hours are:	
<b>Oct. 1 - March 31:</b> 7 days a week, 7 AM to 8 PM. Closed on major holidays.	
<b>April 1 - Sept. 30:</b> Monday-Friday, 7 AM to 8 PM. Closed on major holidays.	
Do you work? <input type="checkbox"/> Yes <input type="checkbox"/> No	Does your spouse work? <input type="checkbox"/> Yes <input type="checkbox"/> No
List your Primary Care Physician (PCP), clinic, or health center:	
Your email address:	

**Section 2 - Continued**

**Paying your plan premiums (if applicable)**

You can pay your monthly plan premium (including any late enrollment penalty that you currently have or may owe)

- By mail; get a monthly bill.
- Electronic funds transfer (EFT) from your bank account each month. Please enclose a VOIDED check or provide the following:

Account holder name: \_\_\_\_\_

Bank routing number: \_\_\_\_\_ Bank account number: \_\_\_\_\_

Account type:  Checking  Savings

**You can also choose to pay your premium by having it automatically taken out of your**

- Social Security or  Railroad Retirement Board (RRB) benefit each month.

**If you have to pay a Part D-Income Related Monthly Adjustment Amount (Part D-IRMAA), you must pay this extra amount in addition to your plan premium.** The amount is usually taken out of your Social Security benefit, or you may get a bill from Medicare (or the RRB). DON'T pay Baylor Scott & White Health Plan the Part D-IRMAA.

**Office Use Only:**

Agent Name: \_\_\_\_\_ NPN: \_\_\_\_\_

Agent Signature: \_\_\_\_\_ Date: \_\_\_\_\_

**Enrollment Period:**  IEP  AEP  SEP (type): \_\_\_\_\_  Not Eligible

Effective Date of Coverage: \_\_\_\_\_

**PRIVACY ACT STATEMENT**

The Centers for Medicare & Medicaid Services (CMS) collects information from Medicare plans to track beneficiary enrollment in Medicare Advantage (MA) Plans, improve care, and for the payment of Medicare benefits. Sections 1851 and 1860D-1 of the Social Security Act and 42 CFR §§ 422.50 and 422.60 authorize the collection of this information. CMS may use, disclose and exchange enrollment data from Medicare beneficiaries as specified in the System of Records Notice (SORN) "Medicare Advantage Prescription Drug (MARx)", System No. 09-70-0588. Your response to this form is voluntary. However, failure to respond may affect enrollment in the plan.



**Typically, you may enroll in a Medicare Advantage plan only during the annual enrollment period from October 15 through December 7 of each year.** There are exceptions that may allow you to enroll in a Medicare Advantage plan outside of this period.

Please read the following statements carefully and check the box if the statement applies to you. By checking any of the following boxes you are certifying that, to the best of your knowledge, you are eligible for an Enrollment Period. If we later determine that this information is incorrect, you may be disenrolled.

- I am new to Medicare.
- I am enrolled in a Medicare Advantage plan and want to make a change during the Medicare Advantage Open Enrollment Period (MA OEP).
- I recently moved outside of the service area for my current plan or I recently moved and this plan is a new option for me. I moved on (insert date)\_\_\_\_\_.
- I recently was released from incarceration. I was released on (insert date)\_\_\_\_\_.
- I recently returned to the United States after living permanently outside of the U.S. I returned to the U.S. on (insert date)\_\_\_\_\_.
- I recently obtained lawful presence status in the United States. I got this status on (insert date)\_\_\_\_\_.
- I recently had a change in my Medicaid (newly got Medicaid, had a change in level of Medicaid assistance, or lost Medicaid) on (insert date)\_\_\_\_\_.
- I recently had a change in my Extra Help paying for Medicare prescription drug coverage (newly got Extra Help, had a change in the level of Extra Help, or lost Extra Help) on (insert date)\_\_\_\_\_.
- I have both Medicare and Medicaid (or my state helps pay for my Medicare premiums) or I get Extra Help paying for my Medicare prescription drug coverage, but I haven't had a change.
- I am moving into, live in, or recently moved out of a Long-Term Care Facility (for example, a nursing home or long term care facility). I moved/will move into/out of the facility on (insert date)\_\_\_\_\_.
- I recently left a PACE program on (insert date)\_\_\_\_\_.
- I recently involuntarily lost my creditable prescription drug coverage (coverage as good as Medicare's). I lost my drug coverage on (insert date)\_\_\_\_\_.
- I am leaving employer or union coverage on (insert date)\_\_\_\_\_.
- I belong to a pharmacy assistance program provided by my state.
- My plan is ending its contract with Medicare, or Medicare is ending its contract with my plan.
- I was enrolled in a plan by Medicare (or my state) and I want to choose a different plan. My enrollment in that plan started on (insert date)\_\_\_\_\_.
- I was enrolled in a Special Needs Plan (SNP) but I have lost the special needs qualification required to be in that plan. I was disenrolled from the SNP on (insert date)\_\_\_\_\_.
- I was affected by an emergency or major disaster (as declared by the Federal Emergency Management Agency [FEMA]) or by a Federal, state or local government entity. One of the other statements here applied to me, but I was unable to make my enrollment request because of the disaster.

If none of these statements applies to you or you're not sure, please contact Baylor Scott & White Health Plan at 1-800-782-5068 (TTY users should call 711) to see if you are eligible to enroll. From Oct. 1 - March 31, we are open 7 days a week, 8 AM to 8 PM (closed on major holidays). From April 1 - Sept. 30, we are open Monday-Friday, 8 AM to 5 PM (closed on major holidays).

**IMPORTANT INFORMATION:**

**2024 Medicare Star Ratings**



**Baylor Scott & White Health Plan - H8142**

For 2024, Baylor Scott & White Health Plan - H8142 received the following Star Ratings from Medicare:

**Overall Star Rating:** ★★★★★☆  
**Health Services Rating:** ★★★★★☆  
**Drug Services Rating:** ★★★★★☆

Every year, Medicare evaluates plans based on a 5-star rating system.

**Why Star Ratings Are Important**

Medicare rates plans on their health and drug services.

This lets you easily compare plans based on quality and performance.

Star Ratings are based on factors that include:

- Feedback from members about the plan's service and care
- The number of members who left or stayed with the plan
- The number of complaints Medicare got about the plan
- Data from doctors and hospitals that work with the plan

More stars mean a better plan – for example, members may get better care and better, faster customer service.

**The number of stars show how well a plan performs.**

- ★★★★★ EXCELLENT
- ★★★★☆ ABOVE AVERAGE
- ★★★☆☆ AVERAGE
- ★★☆☆☆ BELOW AVERAGE
- ★☆☆☆☆ POOR

**Get More Information on Star Ratings Online**

Compare Star Ratings for this and other plans online at [medicare.gov/plan-compare](https://www.medicare.gov/plan-compare).

**Questions about this plan?**

Contact Baylor Scott & White Health Plan 7 days a week from 7:00 a.m. to 8:00 p.m. Central time at 866-334-3141 (toll-free) or 711 (TTY), from October 1 to March 31. Our hours of operation from April 1 to September 30 are Monday through Friday from 7:00 a.m. to 8:00 p.m. Central time. Current members please call 866-334-3141 (toll-free) or 711 (TTY).

NOTES

NOTES

## NOTES

## Our mission

Founded as a Christian ministry of healing more than 100 years ago, Baylor Scott & White Health promotes the well-being of all individuals, families and communities.

Learn more today!

[MyBSWMedicare.com](https://www.MyBSWMedicare.com)



Baylor Scott & White  
Health Plan

**BSW SENIORCARE**  
ADVANTAGE • HMO-POS

BSW SeniorCare Advantage HMO-POS is offered by Baylor Scott & White Health Plan, a Medicare Advantage organization with a Medicare contract. Enrollment in BSW SeniorCare Advantage depends on contract renewal with Medicare.

You must continue to pay your Medicare Part B premium.

Other pharmacies, physicians and providers are available in our network.

Not connected with or endorsed by the United States government or the federal Medicare program.